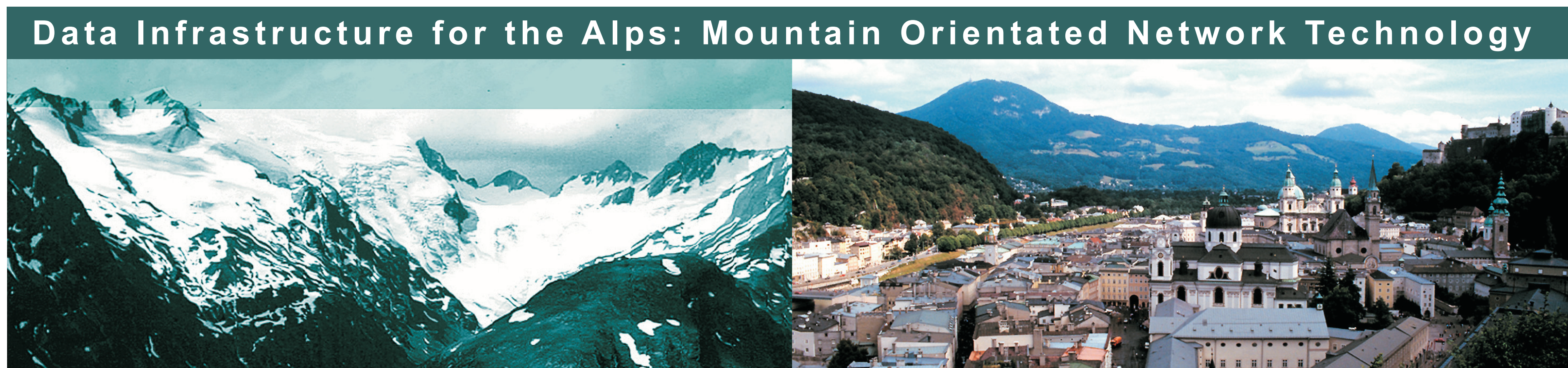




DIAMONT is financed by the European Union, Interreg IIIB-Project, Alpine Space Programme, Priority 1, Measure 1; <http://www.alpinespace.org>



DIAMONT

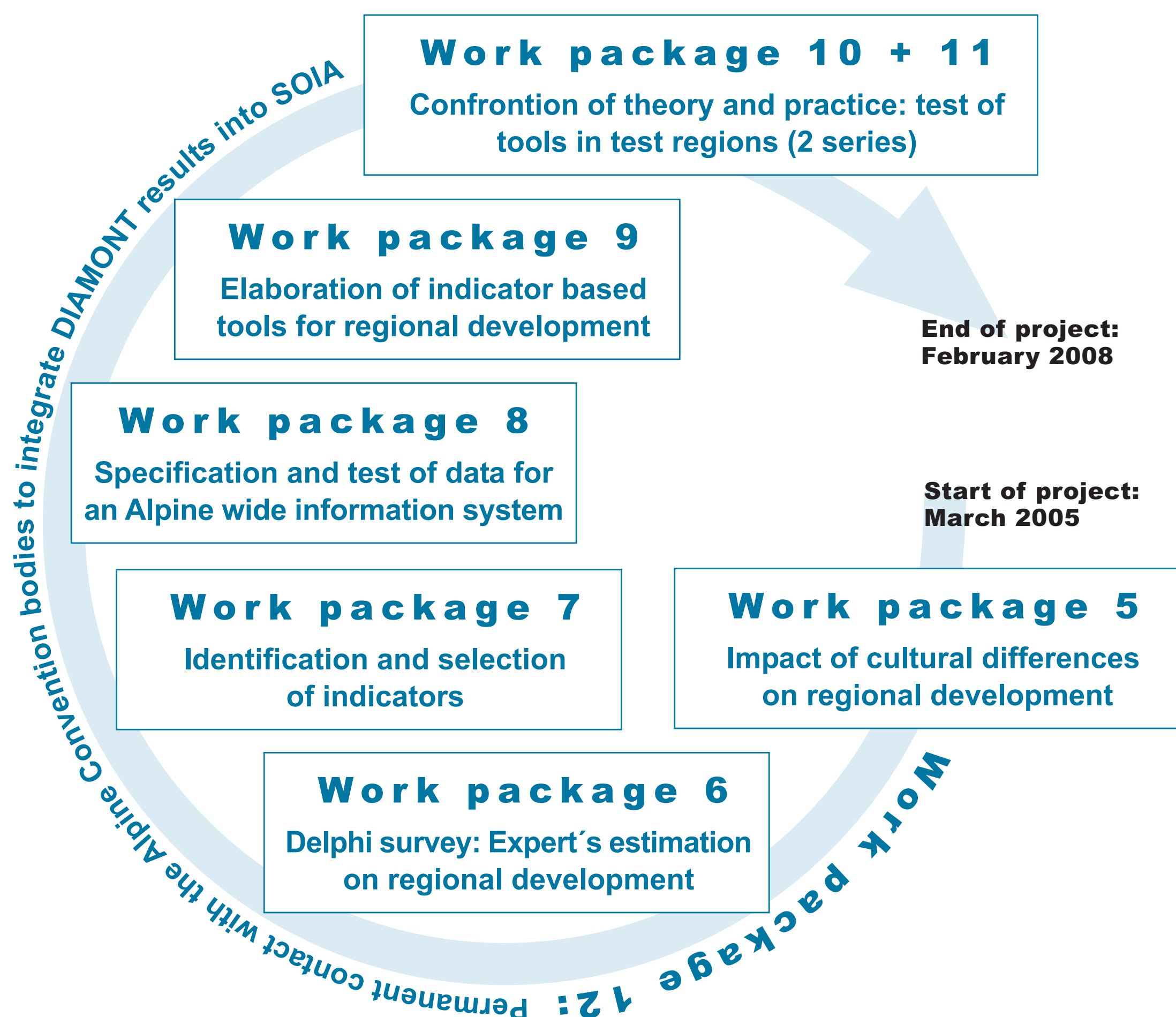


<http://diamont.uibk.ac.at>

Objectives and outputs

The Alps are considered as one of the most sensitive regions in Europe. To ensure the sustainable development of this unique area, seven Alpine States and the EU signed the „Alpine Convention (AC)“ in 1991. But how can a coherent economic and social development, a balanced competitiveness of the regions or the conservation of natural and cultural diversity be realised and measured?

Primarily, **thorough knowledge** on the specific structures and problems in the Alpine space is needed to cope with the future challenges. But likewise important is the **identification of adequate indicators and tools describing and steering relevant regional development processes**. Thus, DIAMONT aims to advise the Permanent Secretary of the AC on the elaboration of an Alpine wide information system (SOIA) and the selection of appropriate indicators and relevant data for sustainable regional development. It will take into account the **rating of experts** as well as **the expectations and experiences of regional stakeholders**. The intensive cooperation and dialog between private corporations, public authorities, scientific institutions, non governmental organisations and stakeholder within the project result in a better understanding of the relevant driving forces.



Work steps

In a first step, basic information on the development of Alpine regions is gathered by means of literature research and expert interviews. The question how **cultural differences** like norms, administration, value systems, etc. **influence regional policy and development** is examined with studies in six Alpine countries (WP5: Martin Boesch, FWR-HSG). In a **Delphi survey** about 60 experts are asked to express their estimations on **challenges, problems or chances** existing or maybe arising in the **future of the Alpine Space** (WP6: Vincent Briquel, CEMAGREF). Based on the results of these studies a specific relevant sector (e.g. tourism, agriculture) is chosen and studied in detail. Adequate **indicators** will be defined (WP7: Konstanze Schöntaler, Bosch & Partner) and regionally **comparable data detected** (WP8: Ulrike Tappeiner, EURAC). Subsequently, **planning tools** are elaborated for specific clusters of development regions (WP 9: Stefan Marzelli, ifuplan). To guarantee their practical use these tools are discussed with the public and adapted to the experiences of the stakeholders in two successive **workshops in five test regions** (WP 10/11: Mimi Urbanc, AMGI / Tommaso dal Bosco, UNCEM).

Project information

Title: Data Infrastructure for the Alps: Mountain Orientated Network Technology
Funding: European Union, Interreg IIIB-project, Alpine Space Programme
National co-funding: Federal Ministry for Environment, Nature Conservation and Nuclear Safety (G), the Bavarian Ministry for Environment, Health Care and Consumer Protection (G), Ministero delle Infrastrutture e dei Trasporti (I) and the State Secretariat for Economic Affairs - seco (CH)
Overall project costs: 2.027.287 Euro
Duration: March 2005 until February 2008
Lead-Partner: Leopold Franzens University of Innsbruck (LFUI), Institute for Geography, Austria (<http://geowww.uibk.ac.at>)
Other partners:
 European Academy Bozen/Bolzano (EURAC), Italy (<http://www.eurac.edu>)
 Anton Melik Geographical Institute (AMGI), Slovenia (<http://www.zrc-sazu.si/gi/>);
 Bosch & Partner GmbH (Bosch&Partner), Germany (<http://www.boschpartnergmbh.de>)
 Agricultural and environmental engineering research (CEMAGREF), France (<http://www.grenoble.cemagref.fr/grenoble/>);
 ifuplan, Germany (<http://www.ifuplan.de/>);
 National Union of Mountain Municipalities, Communities and Authorities (UNCCEM), Italy (<http://www.uncem.it/>);
 Research Institute of Economic Geography and Regional Policy, University of St. Gallen (FWR-HSG), Switzerland (<http://www.fwr.unisg.ch>)
Contact:
 Overall leader: Prof. Dr. Axel Borsdorf (axel.borsdorf@uibk.ac.at)
 Scientific leader: Prof. Dr. Ulrike Tappeiner (Ulrike.Tappeiner@uibk.ac.at)
 Administration: Dipl.Biol. Sigrun Lange (Sigrun.Lange@uibk.ac.at)
Web page: <http://diamont.uibk.ac.at>

