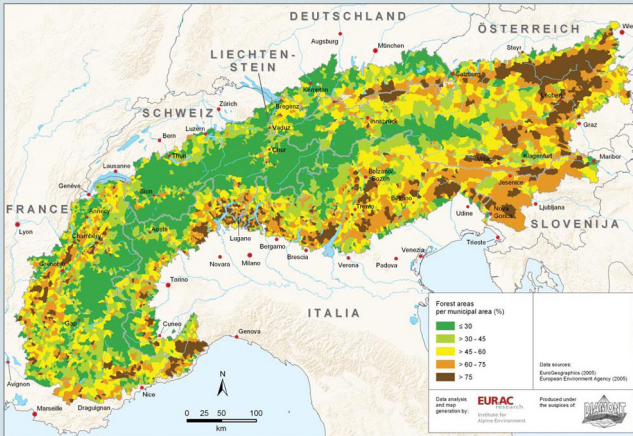


Maps

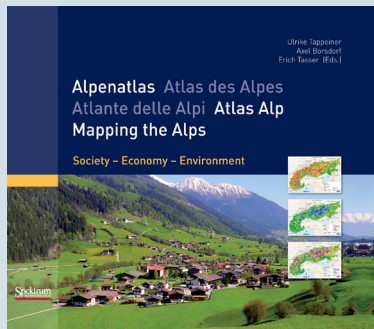
In the course of DIAMONT, result data have been linked to Geographic Information Systems, visualising the distribution of indicator characteristics in the Alps in maps.



These differentiated maps make information more easily recognisable and reveal links between geographic conditions and the subjects in focus.

The maps presented in the DIAMONT database are examples for a spatial representation of some selected indicators contained in the database. They were created within the DIAMONT project and offered by license of the publisher (Spektrum-Akademischer Verlag, May 2008). The maps in the database are an excerpt from “Mapping the Alps“, which is containing more than 100 pan-Alpine maps on social, economic and environmental aspects, presented with concise interpretations in the four Alpine languages: French, German, Italian, Slovenian and English.

Source of supply: www.springer.com



Instruments for land resource management

Within the DIAMONT project the term “instrument” is referring to any approach that is designed to intentionally stimulate and steer land resource management at regional level in a sustainable manner.

The collection of instruments presented in the database provides an overview of the numerous existing possibilities of handling land resource management in the Alps.



Through this information pool, stakeholders shall be put in the position to look beyond the national context and to assess problem-solving approaches and lessons learnt in other countries. It is largely accepted that there is no lack of regional development instruments but a lack of implementation know-how that currently obstructs sustainable spatial development in the Alps.

The instruments in the database include categories, keywords and assessments. Through the option to select policy fields of interest, users will be able to identify relevant instruments for their purpose. All information on individual instruments can be downloaded as pdf-file. As far as available, best practice information and further links are attached to each instrument.

Co-financed by:



Bayerisches Staatsministerium für Umwelt, Gesundheit und Verbraucherschutz



Ministero delle Infrastrutture e dei Trasporti



www.diamont-database.eu



Supporting sustainable regional development

The database derived from the Interreg III B Project DIAMONT

The purpose of the DIAMONT database

The “DIAMONT” project has collected a huge amount of information. To allow its easy access, use, documentation and further exploitation by local stakeholders, the project results are stored and publicly accessible in an online database.

The database offers information about the status of municipalities in many areas of development, and allows stakeholders to carry out benchmark analyse for their respective municipality vis-à-vis other municipalities across the Alpine Convention area. It is dedicated to support sound and transparent decision-making on regional and local level based on statistical data and a transnational collection of regional development instruments.

Conceived with the steering bodies of the Alpine Convention, the database will give a vital impulse to the relaunch of SOIA (System for Observation of and Information on the Alps) and the newly designed objectives of SOIA.

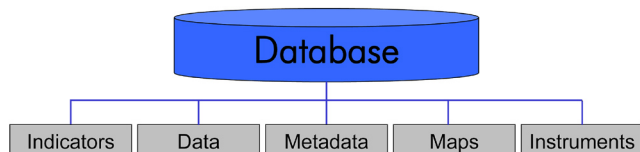
About the DIAMONT database

All information was collected and processed within the EU Interreg IIIB Project “DIAMONT - Data Infrastructure for the Alps: Mountain Orientated Network Technology”. More information:

<http://www.uibk.ac.at/diamont/>

The database is structured in „classes“ which refer to central deliverables of the DIAMONT project, and documentation on the presented indicators, data and maps itself, called metadata documentation.

From the outset of DIAMONT, the Bavarian State Ministry for Environment, Health and Consumer Protection granted the project the programming and hosting of this database until 2012 as an inkind contribution.



Indicators

47059	38,1617647	59,6412556	42,3568879	24,6636771	31,7918972
86009	72,3224748	63,975735	45,9604425	73,9150723	51,3268502
99805	27,1149675	54,3062201	37,1522095	21,0526316	30,1001325
76973	19,108964	55,1296505	39,2771084	16,572717	41,2921325
86572	24,1868224	54,4347826	39,321608	19,9033478	38,2101325
56789	57,0892723	52,0700637	39,1148325	55,7324841	45,9821325
17139	49,122807	53,6312849	39,6694215	24,8603352	24,4501325
61841	13,3154602	50,5660377	36,6621067	10,1366792	23,6721325
82861	27,3119605	55,3770087	42,8298279	26,4524101	30,1001325
47205	30,8074534	61,5183246	42,6497276	32,7225132	30,1001325
11765	14,5098039	50,9960159	39,8753894	12,7401012	30,1001325
84017	22,7015559	57,4344023	44,519774	23,9067042	30,1001325
68394	23,0569948	55,0408719	40,4	11,1116621	30,1001325
65705	16,6383701	54,6099291	40,7407407	12,0567376	30,1001325
30496	14,7395172	50,1272265	38,627451	12,7226463	30,1001325
54299	104,368759	61,5777895	48,5643068	48,6198006	30,1001325
50191	83,9644219	56,898178	45,3990889	66,3853448	30,1001325
08307	18,4238552	49,8896247	38,8316151	15,4525366	30,1001325
13816	68,5087534	49,873631	41,311933	58,8879527	30,1001325
95704	34,0946166	44,982699	34,4218888	21,6839677	30,1001325
08542	71,3557161	55,4607509	41,9625565	61,6040956	30,1001325
08451	12,7640845	43,761302	36,1733931	11,9349005	30,1001325
52096	29,7005988	49,7641509	40,4990403	23,3490666	30,1001325
36842	48,7368421	61,0752688	40,6876791	43,0107527	30,1001325
68248	18,1219748	58,8595484	45,0102429	13,2797551	30,1001325
38561	30,1854975	53,3564815	42,023701	23,4953704	30,1001325

Indicators have been an essential element of the DIAMONT project. They have been arrived at by two approaches - one representing expert indicators which would be desirable (grey background colour in the database), the other representing indicators which are currently available, at least in most Alpine countries. These indicators can be identified by the green background colour of the title.

1) Local centres and fringes between competition and cooperation	3) Society / Culture	SC-4) Public services and security	Access to public transport
1) Local centres and fringes between competition and cooperation	3) Society / Culture	SC-5) Social participation and freedom	Participation in local elections
1) Local centres and fringes between competition and cooperation	3) Society / Culture	SC-5) Social participation and freedom	Election behaviour in core cities and their surroundings
1) Local centres and fringes between competition and cooperation	2) Economy		Employment Rate [1]
1) Local centres and fringes between competition and cooperation	2) Economy		Change in Employment Rate [2]
1) Local centres and fringes between competition and cooperation	2) Economy	EC-1) Economic performance and infrastructure	Land take for settlement and infrastructure
1) Local centres and fringes between competition and cooperation	2) Economy		Job Density [3]
1) Local centres and fringes between competition and cooperation	2) Economy		Change in Jobs Density [4]
1) Local centres and fringes between competition and cooperation	3) Society / Culture		Female Employment Rate [5]
1) Local centres and fringes between competition and cooperation	3) Society / Culture	SC-1) Population	Change of resident population in the core city

The results from both approaches form the content of the class “indicators” of the database. They are documented in the form of “fact sheets”, providing information on title and unit of the indicators as well as calculation formula used and background information. The fact sheets can be downloaded as pdf-files.

Data

Data are stored as “result data“ in the DIAMONT database, which represents calculated indicator values with a spatial resolution of single municipalities. These data were produced within the DIAMONT project through data processing and formula calculation from raw data delivered by statistics agencies.

As data from statistics offices are often subject to legal restrictions and privacy regulation, it was necessary to process raw data into aggregated data for public access. Therefore the results provided respect the legal constraints and at the same time meet public demand for a high level of information.

The DIAMONT database now offers a coherent data base for the entire Alpine Convention area.

Search functions in the database allow the selection of data for geographic areas, single municipalities or thematic issues. Additionally, indicator and metadata fact sheets are available for all data in the database.

Metadata

Metadata give important information on the presented data. Their documentation is following the requirements of the ISO 19115 standard. It was adjusted to the planned metadata documentation of the Alpine Convention for the first Report on the State of the Alps and SOIA. The metadata can be downloaded as pdf-files.

Title	Land cover
Alternate title	Forest Areas [64]
Date	2008-04-30
Date type	publication
Abstract	Forests are one of the formative landscape elements in the Alps where almost half (45.5%) of the area is covered by woodland. Consequently the Alps rank among the most densely forested regions in Europe. Woodland areas in the Alps are increasing slowly but continuously, particularly in areas where traditional agricultural uses have been abandoned. In many cases this happens to the detriment of traditional cultural landscapes that are often rich in species.
Purpose	Interreg IIIB Alpine Space; Project DIAMONT
Status	completed
Language	eng