

# Analysis of the workshop results and their connection to SWOT analysis

Mimi Urbanc & Janez Nared

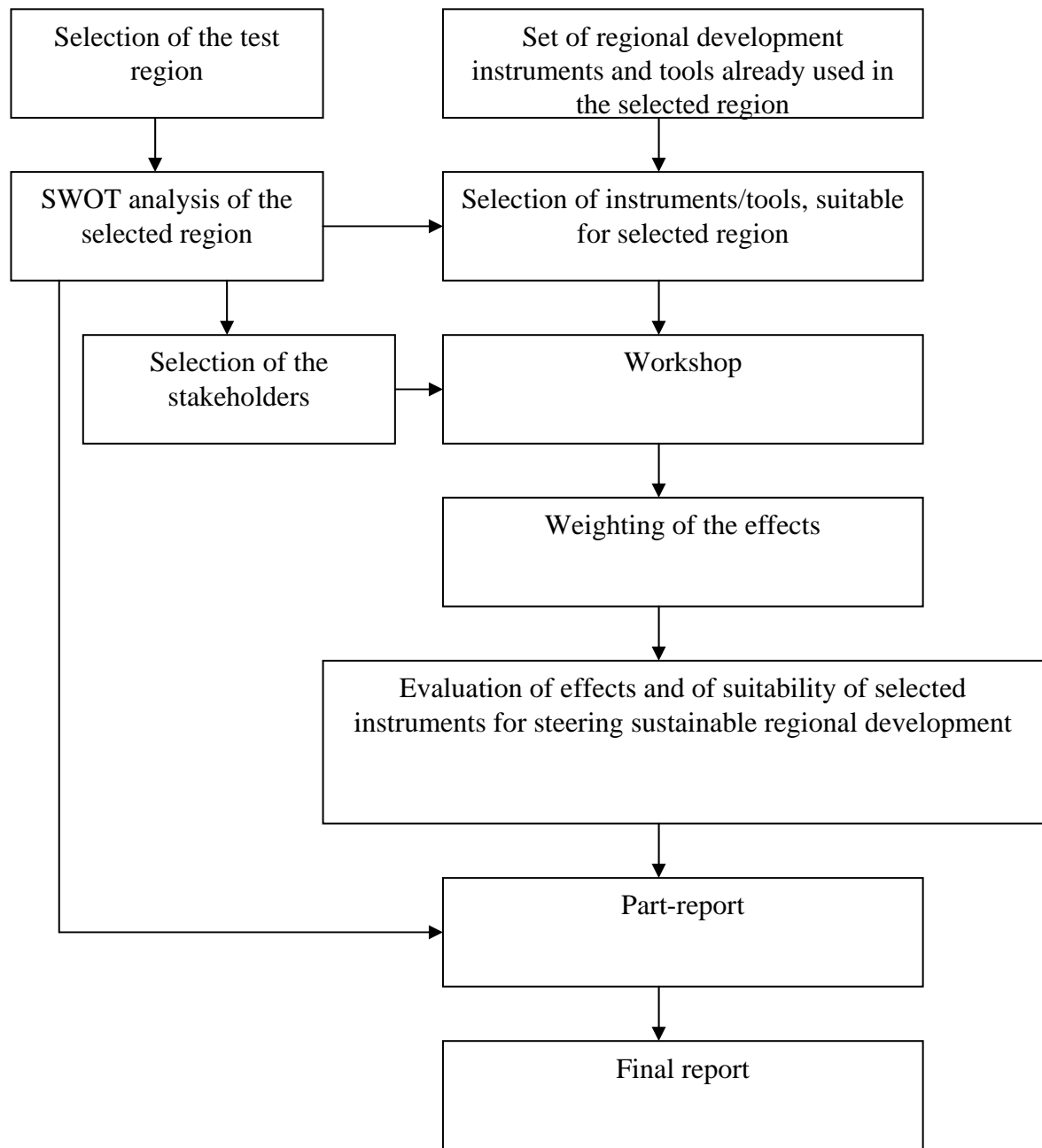


WP 10

AMGI SRC SASA



# THE PROCESS



## Analysis of the workshop results

- All answers referring to the same question should be coupled and interpreted via SWOT analysis.
- Answers must be written very explicitly in order to be understandable.
- Big effort should be stressed on the identification of main regional problems and on definition of possible conflicts in the test region in order to enable further work in WP 11.

# Interference between SWOT analysis and workshop results

Three main interferences are planned:

1. SWOT analysis as a mean for the selection of instruments;
2. SWOT analysis as a base for the appointment of stakeholders, who will be invited to the workshop;
3. SWOT analysis as a base for the interpretation of the workshop results.

# SWOT analysis as a mean for the selection of instruments

- SWOT analysis will point out strengths, weaknesses, opportunities and threats, which will be the basis for the definition of priorities.
- According to appointed priorities selection of the most appropriate instruments should be made.



# SWOT analysis as a base for the appointment of stakeholders, who will be invited to the workshop

- SWOT analysis will define crucial priorities. According to these priorities the most appropriate stakeholders will be selected.
- Stakeholders should cover the contents, which will be emphasized by priorities and instruments.
- They should represent all crucial groups, important for the development of the test region.

# SWOT analysis as a base for the interpretation of the workshop results

- Answers, proposed by stakeholders should be interpreted via SWOT analysis.
- Especially if any specific answer occurs, it should be considered in detail.

# Instructions for elaborating of part report

Part report should be structured as follows:

- Front page
- Context analysis
- List of selected instruments
- List of stakeholders
- The structure of the workshop
- Questions for each part of the workshop/ for each instrument





- Revised answers – the answers must be very clear, understandable to each reader in order to enable the preparation of the final report. Answers should be linked to the main findings of the SWOT analysis if possible.
- Conclusion, where the main results are stressed.

